

GLISTEN

A Daniel Naddafy production
for babies 0 -18 months
and their grown-ups



Come in, relax, find a space and settle.
Slowly, a shimmering surface emerges.
What does it look like?
How does it move?
Listen, what can you hear?

Welcome to a world of shiny things.
Welcome to GLISTEN!

GLISTEN is an interactive performance for babies aged 0-18 months and their grown-ups stunningly co-created by theatre-maker Daniel Naddafy and designer Phoebe Stubbs. The audience are taken on a gentle and immersive journey exploring the world of reflective materials. The empty space of the theatre slowly fills with colour, sounds and surprises, creating a sensory landscape ready to explore after the performance.

Glisten is performed to a very small audience creating an intimate and unique theatrical experience. It is available for touring both in the UK and internationally.

CONTACT DETAILS

daniel_naddafy@hotmail.co.uk

+44 (0) 7753 186702

PERFORMANCE DETAILS

The performances lasts 20 minutes (no interval), followed by a 10 minutes interactive free-play session where the babies can explore the tactile world of Glisten. Due to the intimate nature of the production it is designed for a maximum of 40 audience members; 20 adults and 20 babies who are seated on the adults laps. The performance is strictly for babies aged 0-18 months and not appropriate for older children.

MEDIA

A full version of the performance can be viewed here:

[GLISTEN FULL VERSION](#)

A trailer for the production can be downloaded here:

[GLISTEN TRAILER](#)

A range of production photos can be found here:

[GLISTEN PHOTOS](#)

Web: <http://glistentheatre.wixsite.com/glistentheatre>

Twiter: [@GlistenTheatre](#)





REVIEWS & AUDIENCE FEEDBACK

"Glisten is a diamond in the rough as far as early years experiences go!"

[\(Curious Mum, review\)](#)

"...Naddafy's performance remains entrancing..."

[\(Children's Theatre Review\)](#)

"Terrific watching small faces involved in sound, colour, light and texture – we were enthralled."

[\(Audience member, Half Moon Theatre\)](#)

"Loved the show! The sensual elements for the kids to play with were brilliant."

[\(Audience member, Off Beat Festival, Oxford\)](#)

"A beautiful, sensory first theatrical experience for babies. The actor builds a mesmerising connection with each child at just the right pace. A delight to watch."

[\(Katy Snelling, Head of Programming, Nuffield Southampton Theatres\)](#)

TECHNICAL REQUIREMENTS

- Get-in 75 minutes before half with pre-rig completed.
- Get-out 40 minutes after audience have cleared auditorium.
- Venue configuration: The performance works best in an open studio format with a flat black floor. A full black out is required. The set consists of a marquee frame which is 4m wide, 3m deep 3m high. The frame sits on a minimum performing area of 5m width, 4m depth, 3.5m height. The footprint includes room for the audience to sit. They are seated in a traverse format with the first row on cushions and a second row made up of benches or chairs (venue to supply).
- If the performance space has fixed seating please block these off. This is a limited capacity piece of 40 with babies sat on adults laps.
- Staffing: One performer will tour with the production and an in-house technician is required to assist with get-in and out, focus, and plot.
- One lockable dressing room is required and parking space for a saloon car.
- Sound: A laptop with Qlab tours with the production. A stereo mini-jack input is required from the venue.
- The performance can run with two lighting options depending on the venue. A full technical plan is available on request.
- Lighting Op1: Four lighting stands with LED PAR64's and ETC Nomad tour with the production. A pre-rig of three lights and a DMX connection to venue houselights and rig is required and 13A power to each lighting stand. The lights and sound are operated by the performer. This is only possible for UK touring.
- Lighting Op2: A pre-rig of four sides, three primary colour wash with 3 specials. A Venue technician will be required to operate the show, consisting of 20 cues.

CONTACT DETAILS

daniel_naddafy@hotmail.co.uk

+44 (0) 7753 186702



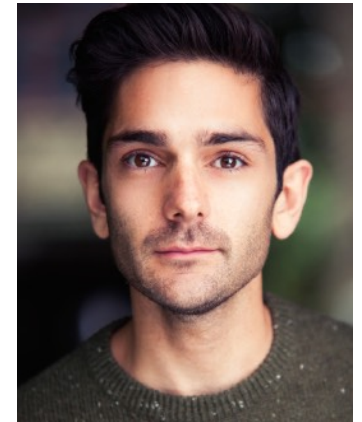
ABOUT THE SHOW

Glisten was co-created by Daniel Naddafy and Phoebe Stubbs. It previewed at Off Beat Festival Oxford in June 2016 then later in September 2016 the performance was developed further with the support of the Oxford Playhouse Theatre. In 2018 it toured twelve venues in the UK as a Half Moon Portfolio show.

Daniel Naddafy - Actor and theatre maker

Daniel is an actor and theatre maker who for the past eleven years has predominately worked in children's theatre. He is currently Artist in Residence at the Oxford Playhouse where he is developing two projects for young audiences. He has performed in several productions with Unicorn Theatre and Polka as well as with the Birmingham Rep, Nottingham Playhouse, York Theatre Royal, The Bush, Theatre Rites and Warwick Arts Centre. His work has taken him all over the UK as well as the world, performing in Norway, Hong Kong, Japan, South Korea and Singapore.

Web: danielnaddafy.com



Phoebe Stubbs - Visual artist

Phoebe works across the arts, as a visual artist, designer and editor. She trained as a glassmaker and her visual artwork and design focuses on light and materiality, often inspired by photographic and digital processes as they evolved from traditional optics using glass technologies. She has exhibited in the US and the UK, most recently at Unit 3 Projects in London and the Urban Institute of Contemporary Art in Grand Rapids, Michigan.

Web: phoebestubbs.info